

GUINEA-BISSAU OUTREACH

A Challenge of Love



Luciano and Andreia Rodrigues, Missionaries

Table of Content

I-Presentation.	3
Mission Statement	3
Our Core Values	3
Our Cross-Cultural Commitment	3
Our Objectives.	4
II-History	5
Hisportic Christian Mission	5
The Portuguese Speaking World	6
Brief History of Guinea-Bissau.	7
Who We Are	7
How GBO Began	8
Why Guinea-Bissau	8
III-Activities in Place	8
GBO Today.....	8
Briefly Description of Activities	9
1. Community Development	9
2. Education	9
3. Church Planting	9
4. Philosophy of Ministry	11
IV-The Next Step	12
GBO Tomorrow	12
The Relevance of the Project	12
1. Part of the 10/40 Window Challenge	12
2. Strategic Location	13
3. Issue of Education	14
4. A Missionary Challenge	15

Project’s Description	15
Institute for Development and Evangelism (IDE)	15
Goal	15
Vision	15
Foundation	16
Emphasis	16
1. Discipleship School	16
2. School of Ministry.....	16
3. Theological School.....	17
The Three-Phase Format	17
Pedagogy	18
Bethel Christian School	18
V-Other Partners and Key Players in GBO	18
VI-General Timeline	20
VII-Building Project	21
VIII-Financial Project	22
1. Building Project Budget	22
2. Family and Work Budget	22
IX-Final Consideration	23
X-Description of Equipment and Material Needed	23
Bible Institute	23
Bethel Christian School	24



"... and all the peoples on earth will be blessed through you." Gn. 12:3b

I. Presentation

Mission Statement

The Guinea-Bissau Outreach (GBO) is a Christ-centered initiative completely motivated by God's word that exists to glorify Him making His name known primarily among the unreached of Guinea-Bissau and ultimately among the nations of the earth, through community development, education, church planting, and leadership training.

GBO Core Values

1. Faith - We are committed to Faith in Jesus Christ as expressed in the Bible
2. Prayer - We are committed to continual Prayer
3. Worship - We are committed to faithfully offering our worship before God
4. Biblical Teaching - We are committed to relevant Biblical teaching that transforms lives
5. Outreach - We are committed to bringing people to personal faith in Christ at any cost
6. Giftedness - We are committed to utilizing the giftedness of all believers, men and women, who are called by God
7. Change - We are committed, in an ever changing culture, to effectively present the unchanging Gospel
8. Excellence - We are committed to excellence in everything God calls us to do

GBO Commitment

We believe God has called us to reach the unreached so that:

- We are committed to cultural sensitivity and to learn, respect, and value the local culture as part of God's creative work.

- We are committed to recognize the value of local people as God's servants, acknowledging their important role in the development of the church.
- We are committed to plant indigenous churches so the local people may worship God in an environment favorable to a growing relationship with Jesus.
- We are committed to use the national language to preach the gospel in relevant ways as the true Word of God applicable for all humanity.
- We are committed to equip Christians through Biblical preaching and teaching, through formal programs, church activities, and personal discipleship.
- We are committed to reliance on prayer for direction, conception, planning and execution of the ministries and activities.
- We are committed to helping people discover their spiritual gifts that they might use them in the building up of the Body of Christ, the church.
- We are committed to all people, just as they are, without regard to ethnicity, race, gender, age, lifestyle, or whatever. We value cultural diversity.
- We are committed to receiving direction from the Holy Spirit that enables creativity and innovation in methods in order to achieve effectiveness in ministry.
- We are committed to maintaining a high standard of excellence in all ministries. This will be achieved when every person is exercising his or her God-given spiritual gifts, to the best of his or her ability.

We believe that life is meant to be given away and that Christianity exists to share Christ with others. We will develop aptitudes that encourage numerical growth without compromising in any way our integrity or our commitment to Biblical truth.

GBO Objectives

- To reach out pioneer fields in order to plant new churches, initially in Guinea Bissau
- To promote theological education and multiplication of national workers
- To promote education and consistent children evangelism
- To promote the maturity of the churches, leading them to understand and fulfill their task in the midst of the local and global community

- To develop social projects in order to benefit the local community and to cooperate to the accomplishment of GBO's goals
- To promote unity and mutual cooperation among churches
- Supporting, investing, promoting and commissioning national leadership
- Be connected and integrated with local communities served by GBO
- Conduct the churches to spiritual and numerical growth

The vision of GBO is to go to all people groups and make them disciples of Jesus Christ (Matthew 28).

II. History

Hisportic Christian Mission

In 1983, after nine years on the mission field in Brazil, Wayne Long and his family returned to America for a year's furlough. While doing research, Wayne discovered that there were a large number of Portuguese-speaking people living on the East Coast of the United States. With this discovery, God placed a love for these people in his heart. Wayne had been uniquely prepared for this work because he spoke Portuguese fluently and his ministry calling was evangelism and church planting.

Wayne and his wife, Gail, prayed about this great need. After seeking wisdom and confirmation of the Lord's leading from close friends and church leaders, they founded the Hisportic Christian Mission in 1984. "Hisportic" was a new word meaning "Portuguese-speaking."

From that beginning, a great vision—to present the Gospel of Jesus Christ in their own language to the thousands of people who live in the United States and speak Portuguese—was born.

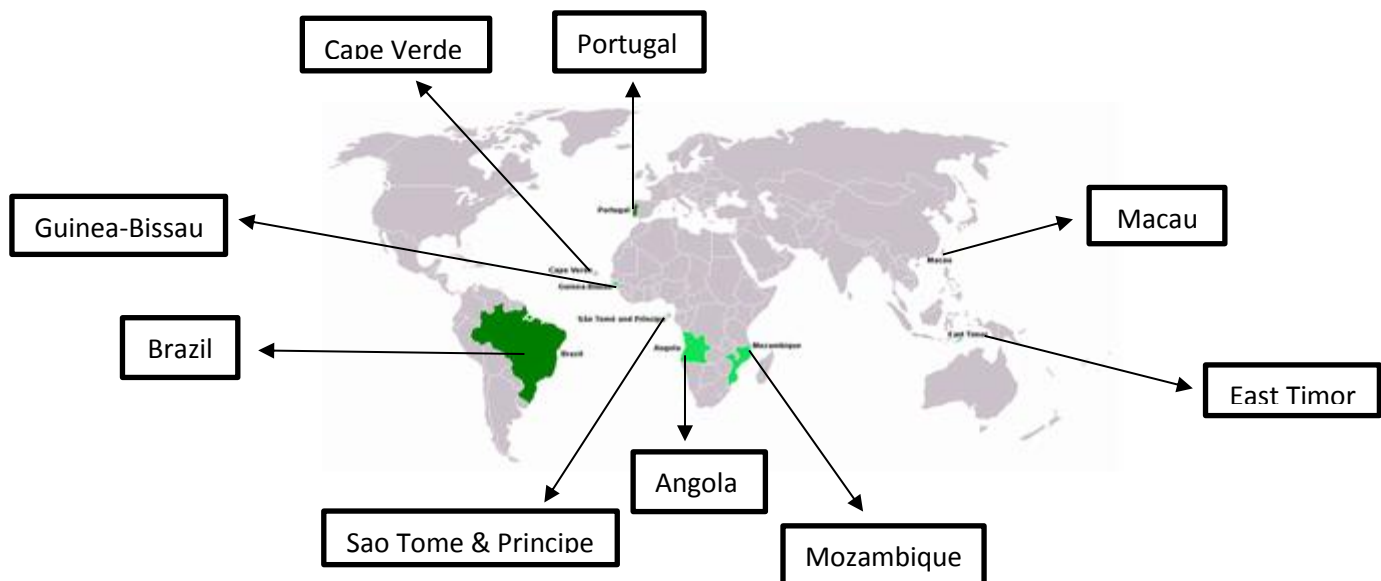
By the year of 2000, the vision had expanded to establish churches in every major city in the United States where Portuguese-speaking people had immigrated. Over 50 churches have been planted along the East Coast of the United States, from Nashua, New Hampshire, to Orlando, Florida.

After the retirement of Wayne Long, Carl Bookout became the Executive Director for Hispartic Christian Mission in January 2007. Previously, Carl served in ministries with Christian Churches in Missouri, California, Idaho, and Texas. He had been a member of the Board of Directors since 1990, serving as Chairman of the Board for nine years. He is a graduate of Ozark Christian College, Joplin, MO, and Azusa Pacific University, Azusa, CA. Naomi, his wife, is the Children's Director of the Bay Area Christian Church, Houston, TX.

The growth of Hispartic Christian Mission led to a new expansion and the mission began to work internationally to reach the Portuguese-speaking world for Christ.

The Portuguese Speaking World

Spoken by nearly 300 million people throughout the world, Portuguese is one of the most widely spoken languages in the world. Having its bulk of native speakers in Brazil, Portuguese is also spoken as primary and secondary language in nine other countries (of which eight are still considered mission fields) in the five continents.



Brief History of Guinea-Bissau

The Republic of Guinea-Bissau is located in West Africa. The country is bordered by Senegal to the north and Guinea to the south and east, with the Atlantic Ocean to its west. It covers nearly 14,000 sq mi with an estimated population of 1,600,000.

Guinea-Bissau was once part of the kingdom of Gabu, part of the Mali Empire; parts of this kingdom persisted until the eighteenth century, while others were part of the Portuguese Empire. It then became the Portuguese colony of Portuguese Guinea in the 19th century. Upon independence, declared in 1973 and recognized in 1974, the name of its capital, Bissau, was added to the country's name to prevent confusion with the Republic of Guinea.

Only 14% of the population speaks the official language, Portuguese. 94% speak Kriol, a Portuguese-based creole language, and each tribe speaks its own native African language. The main religions are Islam and African traditional religions. The country has been suffering many events of political instability. After the civil war in 1998, which put an end in the dictatorship of Nino Viera, there have been numerous attempts of coups and conflicts involving military force. In 2009, this political dispute ended with the assassination of the supreme chief of the armed forces and hours later, the assassination of the elected president as they fought each other. Under the command of members of the government and the armed forces, the country also has become a route for international drug –trafficking, which brings even more corruption and violence into the scenario. The Guinean people are completely vulnerable to this instability, suffering the consequences of being one of the worse quality of life in the world.

Who We Are

My family and I are part of the fruits of American Christian Churches' missionary efforts in Brazil. We grew up in Brasilia Christian Church with the missionary Lloyd David Sanders and since the year of 2000, we have been developing a missionary project in Guinea-Bissau, a Portuguese speaking country located



Luciano, Andreia, Gaby (13), and Luciano Jr. (9)

on the west part of the African continent.

How GBO Began

At age 23, my life was dramatically impacted by Scriptures like the Great Commandments (Mk.12:30, 31) and the Great Commission (Mt. 28:18:20). It was during a mission trip in Cape Verde, while seeing the needs of a people that had no access to the Gospel, that the passion became a commitment and my values and priorities for life were established once for all. My wife had the same passion since a very young age and not only was the desire for missions part of her life, but she also had great expectation for the day God would allow her to serve the African people.

Why Guinea-Bissau

In 1999 I met Dr. Wayne Long, the founder of Hisportic Christian Mission, at one of our national conventions in Brazil. I was working to raise up support to start my missionary journey in West Africa, when, talking to Wayne, I learned that he had been praying for six years for the Manjak people, an unreached people from northern Guinea-Bissau, West Africa. He wanted to partner with someone to make the project happen and so did I. One year later God brought us together, along with some Brazilian churches, like different pieces of the same puzzle, so that the Gospel was taken into that part of the world. I have no doubt that God Himself initiated it.

III. Activities in Place

GBO Today

After working five years in Guinea-Bissau (2000 – 2005) the mission grew significantly from a pioneer starting point to four planted churches, two new missions, approximately 300 people attending at the churches, and 21 national leaders in ministry as church leaders and co-workers. We ran an adult educational program and a basic theological training. Today, we also have a fishing community project, which is helping to solve the poverty that some Christians have and developing the local community, and a Christian school functioning in one of our churches. In order to promote the fellowship and ministerial focus we have had our national convention since 2006.

Briefly Description of Activities

1. Community Development

Our church in Cacheu has been successfully developing a fishing project. Fishing is the main activity in the city of Cacheu. There are different ethnic groups specialized in fishing attracted to Cacheu because of the city's rich sea. However, few people have the means to go and get the fish. The church in Cacheu owns two equipped boats and has effectively taken advantage of it. We have about 60 individuals being benefited by this project. People that had no job now are making a living through fishing. Besides stimulating local economy (giving jobs, paying taxes, and supplying the local market), our boats serve the local church as mean of transportation to reach out to villages along the Cacheu River that otherwise would be very difficult. The gospel is being spread alongside with social hope and community development.

2. Education

The first official activity developed by GBO was an adult literacy program from which 56 adults graduated. Understanding this extreme need as an opportunity of serving our community and as a window of opportunity for the gospel, the mission has made education one of its emphases on the field. Besides the literacy program, GBO has offered an intensive theological training, has opened one community Christian school through one of our churches, promoted sponsorship programs to support students of our congregations in local universities and schools, and sent a family of local leaders to a Bible college in Brazil. We believe that by encouraging and promoting education, individuals, the church and local community, and the country itself are benefited as people are being prepared to supply the needs of this country.

3. Church Planting

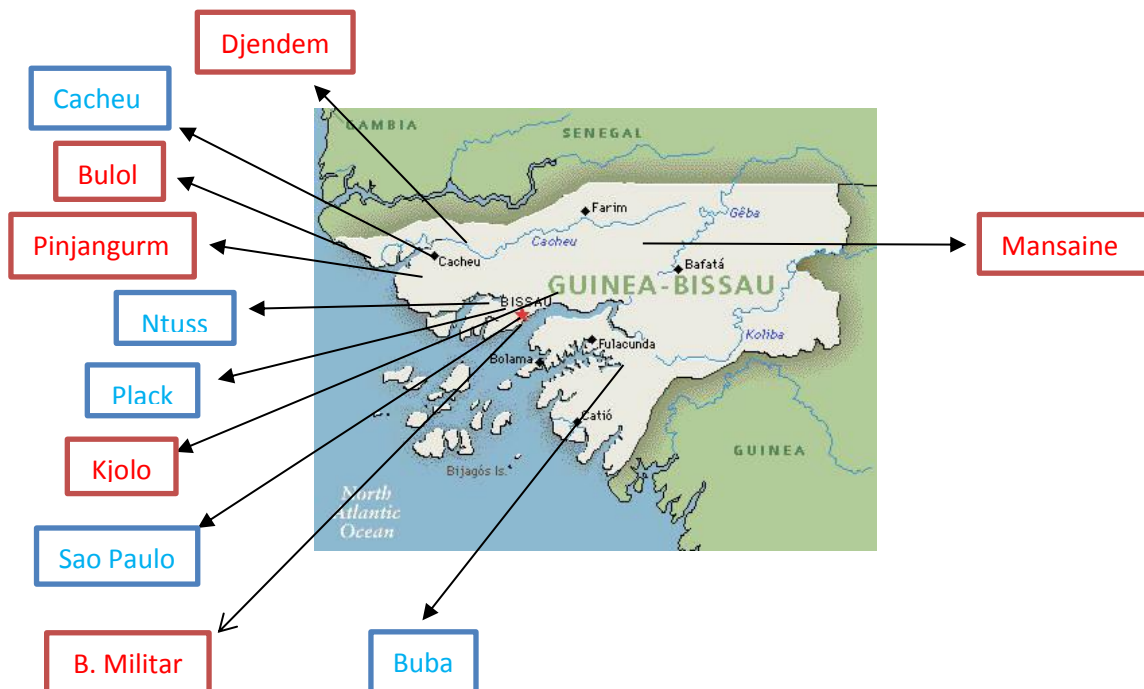
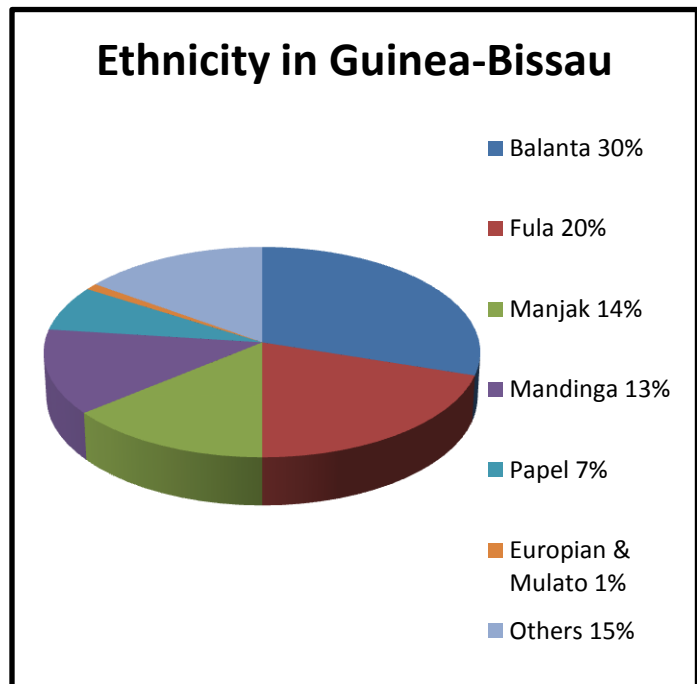
Guinea-Bissau is a multicultural country and this makes church planting a challenge even greater than it normally is. The small population of 1,600,000 inhabitants is sub-divided in almost 40 ethnical groups (according to local statistics). One can imagine the cultural density by thinking about a country approximately the size of the state of Maryland with almost 40 languages and culture expressions representing each ethnical group. Unity is one of the most important principles for the church and one of the most challenging aspects of planting churches in a

context like that. However, God has been extremely gracious and the GBO has planted 5 churches and has been working with 6 church planting projects in Guinea-Bissau. This ministry was initiated among the Manjak people and has directly reached 5 ethnical groups (Manjak, Felup, Balanta, Papel, and Kobiana).

The GBO had the privilege of receiving the first Kobiana converted to the gospel in Guinea-Bissau. The Kobianas are the most resistant, feared, and traditional people-group among the animists.

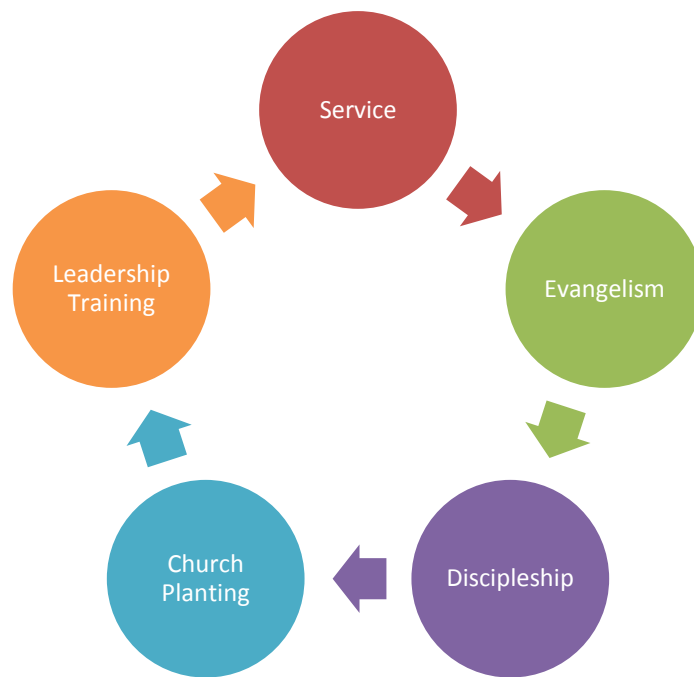
Up to this point there are 9 converted kobianas in the church in Cacheu and the first kobiana preacher. Today our churches are located in Cacheu, Ntuss, Aeroporto (Bissau), Sao Paulo (Bissau), and Buba. Our church planting projects are in Kjolo, Djendem, Pinjangurum, B.

Militar, Mansaine, and Bulol (this last under strong resistance). The map below shows the location of the churches and church plant projects.



4. Philosophy of Ministry

Our philosophy of ministry revolves around five basic principles which are service, evangelism, discipleship, church planting, and leadership training. Our intention is that this becomes our ongoing cycle of ministry. Love is the beginning and the end (as it is the Great Commandment). Loving people through serving their real needs (education and community development) enables people to be more effective in life, and produces social relief. Service also creates great opportunities for relationships which opens door to evangelism. Evangelism handles new converts to discipleship. Once there are disciples churches are organized. Existing churches create the need and the opportunity for leadership training and those trained leaders then are sent to love people starting the process all over and reproducing new churches. It is illustrated in the chart below.



IV. The Next Step

GBO Tomorrow

The next step is the implementation of an educational compound in the city of Bissau with a Christian school for 300 children and a Bible institute, in order to serve our communities and the church.

The Christian school is going to be a model project to be also implemented later on in other communities where the GBO will have the opportunity of serving. In a scenario of educational brokenness, where kids barely complete their school year because of continuous teacher strikes, this school will provide an excellent Christian education and an environment of discipleship for the kids and their parents.

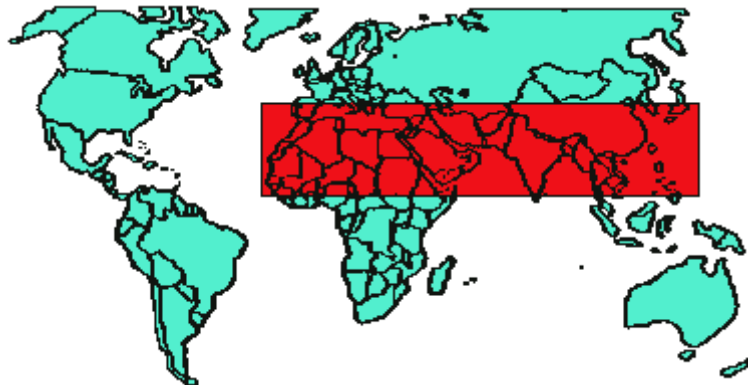
The Bible institute is designed to multiply a national leadership in order to contribute to the growth of the church and the process of church planting in new fields. The Bible institute will receive students from our churches in the capital and countryside as boarding students.

We believe strongly that these educational projects will both bless our communities and help us to accomplish our goals of church planting among those who have not been reached by the gospel.

The Relevance of the Project

1. Part of the 10/40 window challenge

Guinea-Bissau is located in the West part of the African continent in an area called 10/40 window, which is the part of the globe in which live most of the people groups still unreached by the gospel.



The “window” lies across northern Africa and Asia from 10 to 40 degrees latitude north of the equator.

World evangelism statistics: Of the 55 least evangelized countries, 97% of their population lives within the Ten Forty Window.

Unless something changes soon, most of these unreached people will never hear the Gospel.

World Vision has estimated that only about one and a quarter percent (1.25%) of Christian mission giving is going to missions working within the 10/40 Window.

2. Strategic Location

Located in the West Coast of the African continent, Guinea-Bissau is now completely surrounded by Muslim countries that are part of the so-called “resistant belt buckle” of northern Africa (countries closed or restricted to the preaching of the gospel). It is the only country in that region that is not officially Muslim, even though 55% of Guinea-Bissau is Muslim. This means that Guinea-Bissau is an island from where the gospel has great opportunity to flourish, both within its boundaries and spilling beyond its borders. We understand that combining education projects, evangelism, leadership training and church planting is the way to achieve consistent growth for the church in that country. I am fully convinced that the development of this project will bring significant growth to the church in Guinea Bissau, contributing to the advancement of the gospel in that region of the world. The countries that lead the Islamic block of North Africa are interested and they are investing in this small nation, so they can completely dominate the northern part of the continent. The question that comes to mind is: Would the church also be interested in that small but strategic country?



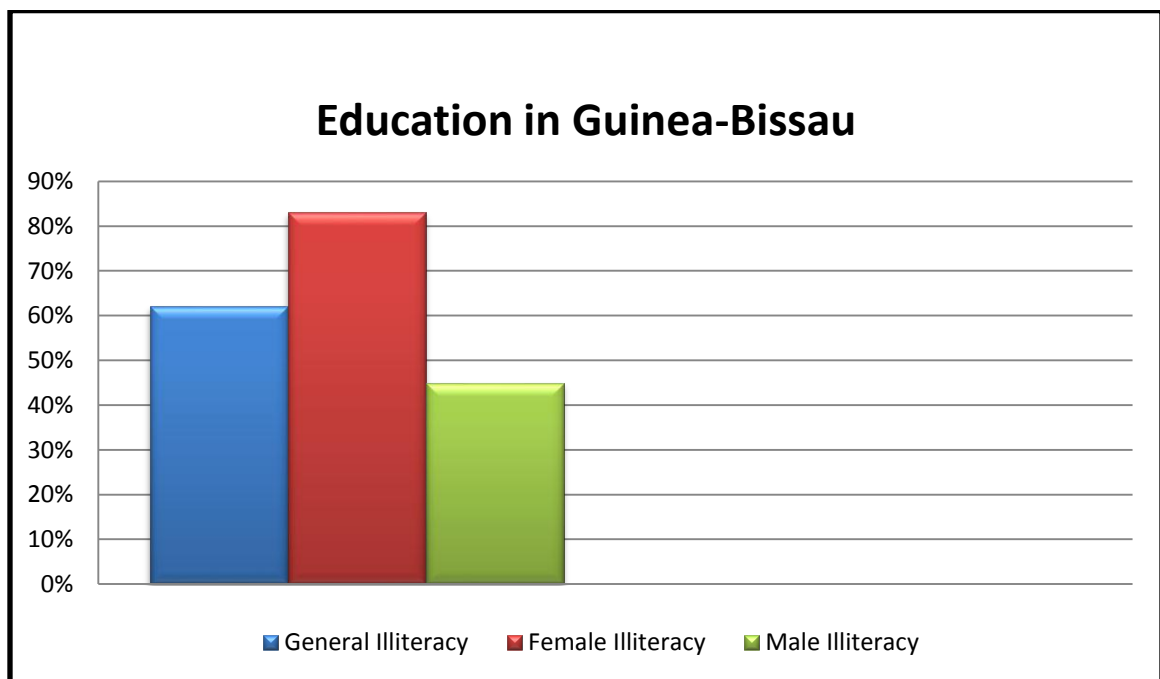
Looking at the reality of our staff, we see that most people are excited and fully committed to the Kingdom of God. However, they must be better prepared. In addition to training the leaders we have, we want to establish a cycle where the work with education, evangelism and even the work

of church planting will be our pool for the identification of potential leaders and formation of future national leaders in a vision of multiplication with quality.

3. Issue of Education

Education is one of the most challenging realities of Guinea-Bissau. A large percentage of the population in Guinea-Bissau has not had access to schools or education of any kind. The country has the 5th lowest position in statistics for female education. The moderate statistics estimate 62% of the total population in illiteracy. This startling reality has challenged us since the very beginning of the Guinea-Bissau Outreach.

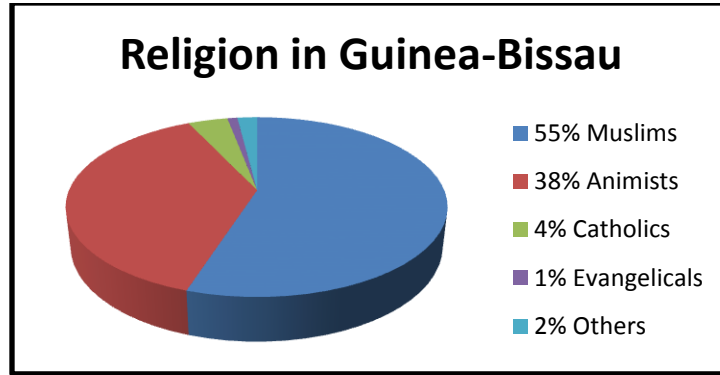
The general data looks like the chart below.



The GBO understands that this represents a great opportunity to serve and minister in our communities in Guinea-Bissau.

4. A Missionary Challenge

There is a real and visible need to preach the Gospel in Guinea-Bissau. We believe strongly that church planting is crucial in the process of proliferation of the Message.



This is why GBO's main and ultimate goal is to plant churches in the whole country, especially in the places where people have no church at all. To reach the unreached of Guinea-Bissau is our primary passion.

Project's Description

Institute for Development and Evangelism (IDE)

This missionary base is going to host a Bible Institute designed to prepare men and women for ministry. Character development, ministry skills, and biblical knowledge are the emphasis governing our curriculum and activities. As an educational project we want to serve the country by preparing capable leaders to serve our communities with effectiveness and excellence. All courses offered will be Bible-centered courses.

Goal

Having church planting and nurturing as our ultimate goal, the Guinea-Bissau Outreach is aiming toward establishing self-governing, self-sustaining, and self-propagating churches in each of the eight districts of Guinea-Bissau over the next six years of work. In order to achieve the desired results we will be focusing on training national leaders and coaching them as they exercise their God-given gifts and ministries.

Vision

Our purpose is to multiply prepared leaders by offering a Bible-based training that will equip students to positively respond to the needs of the church and local communities, promoting the

national initiative in the evangelization of Guinea-Bissau, and enabling our students to serve in three different areas of ministry—church planting, community development, and children/youth education. Through these areas the gospel will be preached holistically among the people of Guinea Bissau.

Foundation

Based on 2 Timothy 2:15, which says, “Be diligent to present yourself **approved** to God as a workman who **does not need to be ashamed**, **accurately handling the word of truth**,” the IDE’s program will be divided into three phases that also reflect the three emphases of training—**character development**, **ministerial skills**, and **biblical knowledge**.

Emphasis

1. Discipleship School (duration including break: six months)

We strongly believe that Christian character, and especially the character of the Christian leader, should be biblically defined (1 Timothy 4:12). In order to address this particular aspect in the formation of our leaders, full-time students will be exposed to intentional teachings of spiritual disciplines and principles of Christian character. They will learn how those principles and disciplines relate to the Bible, their own self, their neighbor, God, and God’s world (mission). We will break down those principles topically, challenging our students to have their lives deeply transformed by God’s word. Character development will drive our pedagogy and activities throughout this period, during which students will also be closely assisted (tutored) and challenged in one-on-one discipleship, service to the churches, and community life and work. We will topically break down biblical principles of Christian living and offer at the same time the proper environment where the students can exercise them in life together (community). This is the intended scenario where conflicts rise, are seen, and can be pastorally treated. The topics studied during the first six months will serve as the foundations for further life, training, and ministry.

2. School of Ministry (duration including breaks: a year and a half)

Following the Discipleship School, while they are still in a full-time program and in a discipleship mode, the students will receive a variety of instructions that will enable them to better respond to the needs of ministry and life. A core of required courses (Composition, Hermeneutics, Homiletics, Management, Apologetics, etc.) will integrate with some elective disciplines (Music, Church Planting, Computer Technology, Principles of Pedagogy, etc.) to

equip our students with tools that will allow them to develop general and specific skills for ministry—according to the particular field of vocation of each student. These disciplines and others will make up the second phase of our program. Besides equipping students to serve the local churches, the program will also enable them to serve in ministries like church planting, community development, and children/youth education. The two years in which students will live in the mission will be the ideal scenario for dynamic and effective discipleship and skills acquisition.

3. Theological School (duration including breaks: two years)

Even though the theological emphasis is located at the last part of our program, the Bible will be present throughout all parts. The program is Bible-based. However, this will be the period in which we will go deeper into Biblical Theology. After two years living in the Bible institute, being exposed to close discipleship and ministerial skills, the students will switch gears. They will leave the classroom setting and will be placed in their respective field of ministry, from which they will finish their studies through modules while developing their ministries. Each module will last two months, during which students will have two intensive weeks of lectures in the classroom setting and six weeks of assignments and independent studies in their fields of work. Within this last phase of our program we want to make the transition from being a student to being a leader in ministry by providing the ideal scenario for the habit of independent study and ministerial opportunities.

Besides equipping students to serve the local churches, the program will also supply laborers for the mission field, enabling them to serve in ministries like church planting, community development, and children/youth education.

Three-Phase Format

The three-phase format will allow us great flexibility to work with different audiences. It is a sequence that progresses from foundations of faith, to skills for ministry, to biblical knowledge and philosophy of religion. For lack of meeting the academic requirements, or for personal choice of vocation, students may opt to take only the first training (Discipleship School). This, however, will provide them with a vibrant possibility for an active and dynamic Christian life. They may choose to take the first and second phases (Discipleship School and School of Ministry), which would correspond to an associate degree in the context. Finally, they could choose to take the entire program and be fully equipped for ministry. The lower levels are

required for enrollment in the upper levels. It would be counterproductive (for our purposes) to form skillful workers with little Christian character; or worse, to form “Theologians” with neither character nor ministerial skills.

Pedagogy

The educational program of IDE is a combination of different pedagogical principles that have been put together intentionally in order to promote more effectiveness in the educational process. It is the result of twelve years of interaction with the target culture in which the program will be applied (the Guinean culture), along with studies and reflections on different principles of Intercultural Studies, Global Church Planting, Anthropology, Pedagogy, etc.

May the Lord of the Harvest bring forth workers for His harvest fields through the program of the Institute for Development and Evangelism.

Bethel Christian School

This missionary base will also host the Bethel Christian School, which is planned to be a model school offering excellent Christian and academic education. We want to recruit and train teachers who will develop a project to teach and minister to the kids of our community through a Christian curriculum as well as a personal project to reach the student’s family for Christ. This model school is meant to be the first of others that the mission intends to establish in this country. This is a phenomenal opportunity to serve, educate and disciple our community.

V. Other Partners and Key Players in GBO

Ozorio Rodrigues Goncalves has been in ministry since 1975. He has served Christian churches in Brasilia, Goiania, Belo Horizonte, Ceilandia, Samambaia e Guara. He has led church planting teams in Belo Horizonte and Brasilia, planting over 20 churches in different locations in Brazil. He also served as president of Brazil’s Theological Christian College for 22 years. The GBO is Glad to have



this experienced brother as partner of Guinea-Bissau Bible Institute.



Bebe and Mariama Djata are fruit of GBO’s ministry in Cacheu, in the northern part of the country. They were leading Cacheu Christian Church and the community development project that is in place there. At this moment they are studying in our Bible College in Brazil

preparing to return to Guinea-Bissau. They will be responsible for GBO's church planting ministry in the north of Guinea-Bissau.

Ray Pouliot is member of the board of directors of Hisportic Christian Mission. He has been is the lead minister in Riverside Christian Church, Merrimack, NH for 20 years. Ray and the church he leads have been involved in missionary projects in Guinea-Bissau since 2000 and he was appointed in November of 2009 as the team management for GBO.



Pedro and Sabado Moreira are part of our national leadership in Guinea-Bissau. They are leading Sao Paulo Christian Church in Bissau, the capital city. Pedro served as GBO's field coordinator for 3 years.

Alexandre and Adriana Santiago - Alexandre Santiago has been involved in church planting ministry and theological training for 10 years. His wife Adriana served as the principal of a Christian school in Brazil for several years when they also partnered with us to develop our intensive theological program in 2005. They also served as missionaries in Guinea-Bissau for a period of 4 years. Adriana is finishing her master degree in Pedagogy and they are returning to Guinea-Bissau to work with GBO. They are a very lovely family with whom we have a very close friendship.



Luis and Quinta Tamba are leading Buba Christian Church in the south of Guinea-Bissau. Luis is our actual field coordinator. He has great heart for pastoring and has done a good job pastoring our leaders.

Weberth and Vanessa Macedo lead the secretary of Brazil Christian Mission and Weberth is also the GBO's agency in Brazil, representing the mission among the Brazilian churches and leaders. He also takes care of the logistic part of GBO.



VI. General Timeline

2011 – 2012 - Contacting churches and donors for GBO (fundraising)

2011 – 2012 - Building of physical structure

May of 2011 - Trip to Guinea-Bissau (visiting churches, meeting leaders, building project part 1)

May of 2012 Trip to Guinea-Bissau (visiting churches, meeting leaders, building project part 2)

June of 2013 - Moving back to Guinea-Bissau

January of 2013 - Meeting with the elders and leaders of Brene village where the mission will be located.

July of 2013 - Meeting with the whole team for prayer and planning

July to October of 2013 - Legalization process of School and Bible Institute

July and August of 2013 - Recruiting professors for the Bible institute

August of 2013 - Recruiting and training teachers (Bethel School)

August to December of 2013 - Recruiting students of Bible Institute (on going activity)

August and September of 2013 - Preparing curriculum and lectures (plan of classes)

January 2014 - Beginning of classes (Bible Institute)

August 2014 - Beginning of classes (Bethel School)

October of 2014 – First church planting annual outreach

October of 2015 – Second church planting annual outreach

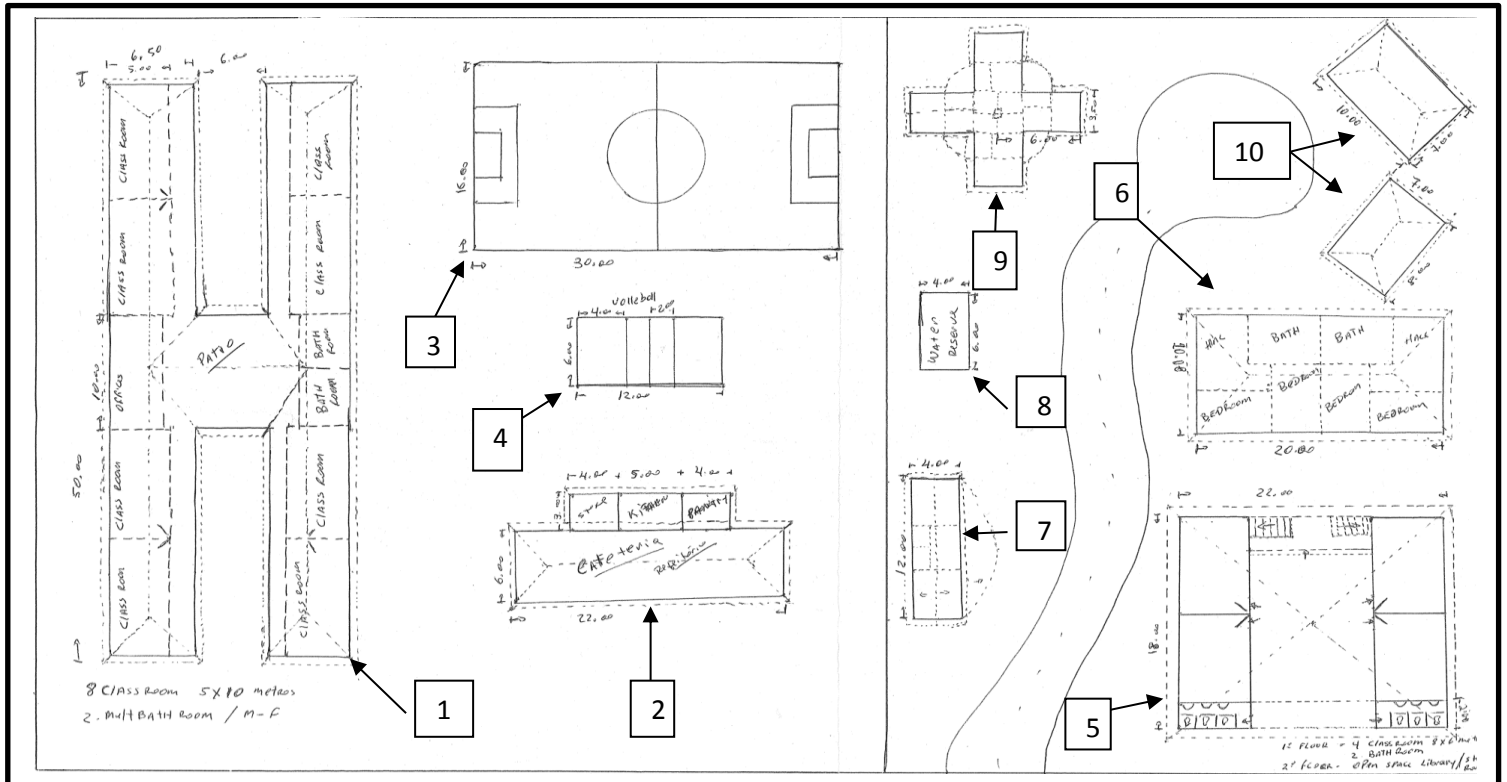
October of 2016 – Third church planting annual outreach

October of 2017 – Fourth church planting annual outreach

December of 2017 – Graduation of Bible Institute's first class

By the year of 2019 – Churches established in the eight districts of Guinea-Bissau

VII. Building Project – Guinea-Bissau Outreach



1. Bethel Christian School
2. Cafeteria
3. Soccer field
4. Volleyball field
5. Bible institute
6. Student Dormitories
7. Offices
8. Water Station
9. Married Student Apartments
10. Missionary Houses

VIII. Financial Project

1. Building Project Budget

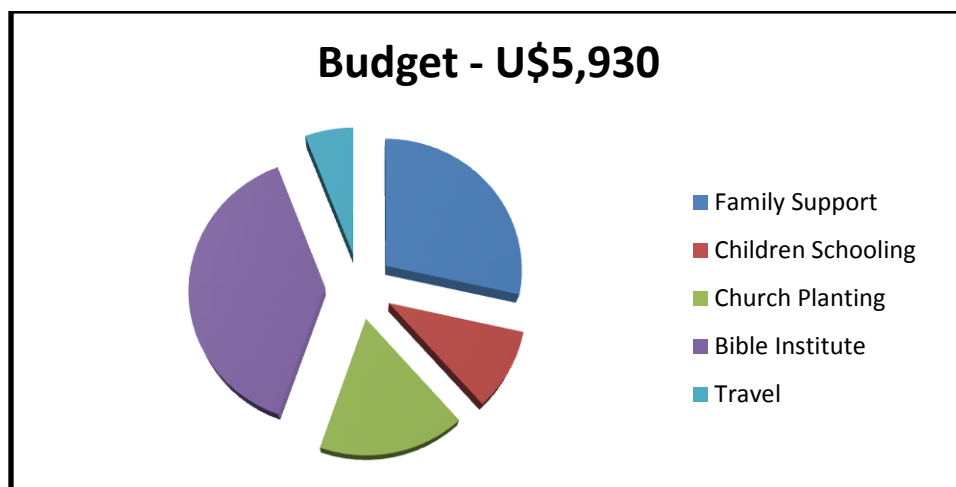
This estimate was made based on research and other building experiences GBO had in the past, building some other structures in Guinea-Bissau. The economic instability makes the numbers very changeable, so they may vary as the time goes.

1	Bethel Chr. School	4,400 Sq. Feet	U\$48,000
2	Bible Institute	1,672 Sq. Feet	U\$24,000
3	Dormitories	2,400 Sq. Feet	U\$26,000
4	Married Stud. Apart.	1,,450 Sq. Feet	U\$14,500
5	Cafeteria	1,208 Sq. Feet	U\$14,000
6	2 Mis. Houses	1,980 Sq. Feet	U\$41,000
7	Cistern	(with water system)	U\$9,000
8	Solar Energy System		U\$10,500
	Total	13,110 Sq. Feet	U\$187,000

2. Family and Work Budget

We are working to raise a \$5,930.00 monthly support that will be used for salary and work. The support will be used as follow (monthly):

- Family support _____ \$1,690.00
- Our children's schooling _____ \$ 590.00
- Church planting funds _____ \$1,000.00
- Bible institute _____ \$2,300.00
- Travel _____ \$350.00



IX. Final Consideration

In a field practically untouched when it comes to preaching the Gospel (northern Guinea-Bissau), traditionally known for witchcraft practices and strong cultural traditions that make people resist any kind of novelty, especially the one of religious character, the first Christian Church of Guinea Bissau was founded in January 27, 2002, in the city of Cacheu , Guinea-Bissau. God has blessed this pioneer work of preaching the gospel. We are aware of the dimensions of the challenges ahead, and considering all God has done, we have no option but to believe that He will make those projects happen, to the glory of His name.

This project is possible and necessary. Possible, because if we are united around the purpose of Christ, we are sympathetic to the plea of the unreached people and the world will know the redemption revealed in Jesus. This is the message that we read between the lines of John 17. It is necessary because reaching the unreached, to some extent, depends on the availability of the already saved. That is also what Paul writes in a kind of rhetorical sermon (Rom: 10); “How can they preach unless they be sent?”

“May the peoples praise you, O God; may all the peoples praise you. May the nations be glad and sing for joy, for you rule the peoples justly and guide the nations of the earth.” Psalm 67: 3-4.

X. Description of Equipment and Material Needed (Wish list)

To organize the Christian school and the Bible institute the GBO will need some equipment that will be sent in a container to Guinea-Bissau. Here is the description of them. The ones in red are those we already have.

Bible Institute and Church Planting

- Wall maps for biblical studies
- Copy machine
- Book shelves for our library
- 4 Printers (HP is the most popular there and easy to find ink)
- 4 Whiteboards (for classroom)
- 60 Individual school desks
- 3 Digital projectors for Power Point
- 3 Projection screens
- 8 Computers (not needed anymore)

- Sound equipment for evangelism (speakers, microphones, cables, etc...)
- 6 Acoustic guitars
- 6 Music stands
- 2 Electric guitars
- 6 keyboards (musical instrument)
- 1 Diesel power generator (10 KVA)
- 2 Lawn mowers
- 1 Chain saw
- 1 Electric table saw (wood)
- 1 Basic toolkit
- 6 Solar Panels
- 1 Solar water pump
- 15 Long portable tables
- 60 portable chairs (seats)
- 16 Bunk beds (around 100 dollars each)
- 2 Office files (2 to 4 drawers)
- Office desks and chairs

Bethel Christian School

- 100 Double desks (to be made in location - 60 dollars each)
- 10 Black boards
- 4 Computers
- 2 Mimeographs
- Sewing machines (for community projects with moms)
- 2 Overheads (not needed anymore)
- 300 School uniform (to be made – 5 dollars each)
- School supplies in general. Example: crayons, colored pencils, pencils, pens, erasers, sharpeners, rules, glue, durex, etc...
- Notebooks
- Calligraphy notebooks (beginning lined paper)
- Bibles and Christian literature for children for Bethel's library (in Portuguese – to be bought in Brazil)
- Children's literature for Bethel's library (in Portuguese – to be bought in Brazil)
- Curriculum for Sunday School and academic education (in Portuguese – to be bought in Brazil)
- Puppets
- 20 Soccer balls
- 10 Volleyball balls

- 2 Volleyball nets
- 4 Soccer nets (indoor size)
- Games in general (for children and youth)